

**Overview**

- M8, male, A-coded, 3-poles; PUR, 2000 cm; M8, female, A-coded, 4-poles
- Dragchain capable; suitable for robotics  $\pm 180^\circ/\text{m}$
- Head A: IP65, IP66K, IP67; Head B: IP65, IP66K, IP67
- Cable: good resistance against chemicals, flames, oils
- Halogen free



**Technical data**

| Side A                            |                                       | Cable                              |                          |
|-----------------------------------|---------------------------------------|------------------------------------|--------------------------|
| Head A: Connection                | M8                                    | Cable: Temperature range (fixed)   | - 40 ...+ 80 °C          |
| Head A: Angle cable outlet        | 0°                                    | Operating voltage (only UL listed) | 30 V AC/DC               |
| Head A: Gender                    | Male                                  | Shielded                           | No                       |
| Head A: Coding                    | A                                     | Bending radius (fixed)             | 20.5 mm                  |
| Head A: No. of poles              | 3                                     | Number of wires                    | 3                        |
| Head A: LED                       | No                                    | Number and diameter of wires       | 3x0.25                   |
| Head A: Width across flats        | AF9                                   | Length tolerance                   | $\pm 30$ cm              |
| Head A: Tightening torque         | 0.4 Nm                                | Cable length                       | 2000 cm                  |
| Head A: Knurled nut material      | Brass, surface Ni                     | Acceleration (C-track)             | max. 10 m/s <sup>2</sup> |
| Head A: Body color                | Black                                 | AWG                                | 24                       |
| Labeling sleeve side A            | Yes                                   | Bending radius (fixed)             | min. 5 × outer diameter  |
| <b>Side B</b>                     |                                       | Torsion speed                      | max. 35 cycles/min       |
| Head B: Connection                | M8                                    | Bending radius (mobile)            | min. 10 × outer diameter |
| Head B: Angle cable outlet        | 90°                                   | Cable type                         | 3                        |
| Head B: Gender                    | Female                                | Cable weight                       | approx. 26.4 g/m         |
| Head B: Coding                    | A                                     | Conductor structure                | 32 × 0.1 mm              |
| Head B: No. of poles              | 4                                     | Cable diameter                     | 4.1 mm $\pm 5\%$         |
| Head B: LED                       | No                                    | Conductor: Material                | Copper, bare             |
| Head B: Width across flats        | AF9                                   | External sheath: Material          | PUR                      |
| Head B: Tightening torque         | 0.4 Nm                                | Insulation: Material               | PP                       |
| Head B: Knurled nut material      | Zinc-pressure die casting, surface Ni | No. of bending cycles (C-track)    | approx. 10000000 Cycles  |
| Head B: Body color                | Black                                 | Nominal voltage                    | 300 V                    |
| Head B: Gasket material           | FKM                                   | No. of torsion cycles              | approx. 2000000 Cycles   |
| Labeling sleeve side B            | Yes                                   | Paired stranding                   | No                       |
| <b>Cables</b>                     |                                       | Single wire diameter               | 0.1 mm                   |
| Cable length                      | 2000 cm                               | Cable: Test voltage                | 2.5 kV                   |
| Length tolerance                  | $\pm 30$ cm                           | Torsion stress in °                | $\pm 180^\circ/\text{m}$ |
| Shielded                          | No                                    | Total stranding                    | 3 wires strand           |
| Conductor structure               | 32 × 0.1 mm                           | Travel speed (C-track)             | max. 3 m/s               |
| AWG                               | 24                                    | Traversing path (horizontal)       | max. 10 m                |
| External sheath: Material         | PUR                                   | Wire cross section                 | 0.25 mm <sup>2</sup>     |
| External sheath: Color            | Black                                 | Wire processing                    | No                       |
| Cable diameter                    | 4.1 mm $\pm 5\%$                      | Wire diameter incl. isolation      | 1.25 mm $\pm 5\%$        |
| Wire cross section                | 0.25 mm <sup>2</sup>                  | External sheath: Color             | Black                    |
| <b>Cable</b>                      |                                       |                                    |                          |
| Cable: Temperature range (mobile) | - 25 ...+ 80 °C                       |                                    |                          |

The product features and technical data specified do not express or imply any warranty. Technical modifications subject to change.

**Technical data**

**Electrical data**

|                                    |                        |
|------------------------------------|------------------------|
| Operating voltage                  | max. 50 V AC / 60 V DC |
| Operating voltage (only UL listed) | 30 V AC/DC             |
| Nominal voltage                    | 300 V                  |
| Contact resistance                 | max. 30 mOhm           |
| Operating current per contact      | max. 4 A               |

**Mechanical data**

|                                 |                          |
|---------------------------------|--------------------------|
| Head A: Degree of protection    | IP65, IP66K, IP67        |
| Head B: Degree of protection    | IP65, IP66K, IP67        |
| Bending radius (mobile)         | min. 10 × outer diameter |
| Bending radius (fixed)          | min. 5 × outer diameter  |
| No. of bending cycles (C-track) | approx. 10000000 Cycles  |
| Torsion speed                   | max. 35 cycles/min       |
| Torsion stress in °             | ± 180 °/m                |
| No. of torsion cycles           | approx. 2000000 Cycles   |
| Acceleration (C-track)          | max. 10 m/s <sup>2</sup> |
| Travel speed (C-track)          | max. 3 m/s               |

**Environmental conditions**

|                            |                  |
|----------------------------|------------------|
| Temperature range (mobile) | - 25 ... + 80 °C |
| Temperature range (fixed)  | - 25 ... + 80 °C |

**Environmental conditions**

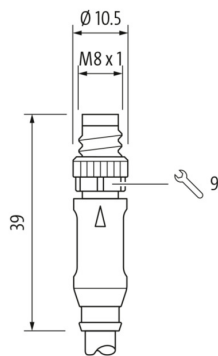
|                                   |   |
|-----------------------------------|---|
| Cable: Temperature range (fixed)  | - 40 ... + 80 °C                                    |
| Dragchain capable                 | Yes   |
| Head A: Chemical resistance       | No  |
| Head A: Flame resistance          | HB (UL 94)  |
| Head A: Oil resistance            | ASTM 1 oil, mineral oils, limited to hydraulic oils |
| Head A: Acid and alkali resistant | No  |
| Head A: Pollution degree          | 3   |
| Head B: Chemical resistance       | No  |
| Head B: Flame resistance          | HB (UL 94)  |
| Head B: Oil resistance            | ASTM 1 oil, mineral oils, limited to hydraulic oils |
| Head B: Acid and alkali resistant | No  |
| Head B: Pollution degree          | 3   |
| Cable: Chemical resistance        | Good (DIN EN 60811-404)                             |
| Cable: Flame resistance           | Conform UL 1581 §1090 (H), CSA FT2, IEC 60332-2-2   |
| Cable: Oil resistance             | Good (DIN EN 60811-404)                             |
| Cable: Silicone-free              | Yes   |

**Commercial data**

|        |          |
|--------|----------|
| Eclass | 27060311 |
|--------|----------|

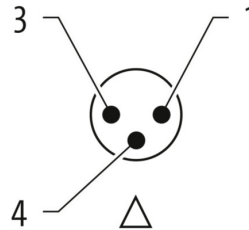
**Side A**

**Technical drawing**



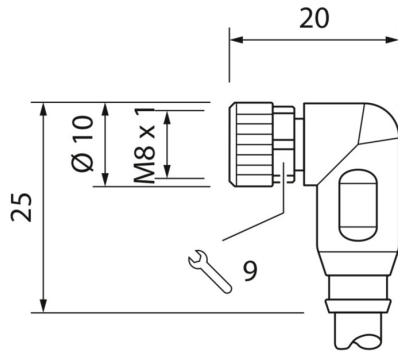
**Side A**

**Coding**

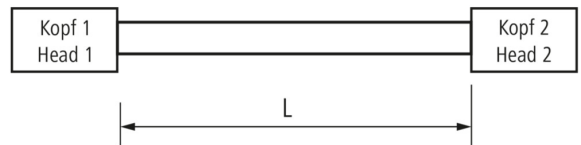


**Side B**

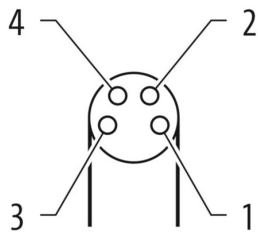
**Technical drawing**



**Dimension drawing**



**Coding**



**Connection diagram**

